

Welcome to the latest Pre-Form Update. As you are aware, the current economic climate and lack of significant capital investments has put serious pressure on our industry. By continuously innovating and building on strong execution, Pre-Form has been able to not only hold it's ground, but to expand into new markets and introduce new solutions. This update will provide your with an updated chapter outlining our recent progress and delivery.

Latest News

Pre-Form Mauritius is a go!

After months of planning and diligence Pre-Form is proud to announce the establishment of our Mauritius branch. Our first project "La Croisette", a 90 000m² Shopping Centre, kicked off in February with structural completion due in April 2012.

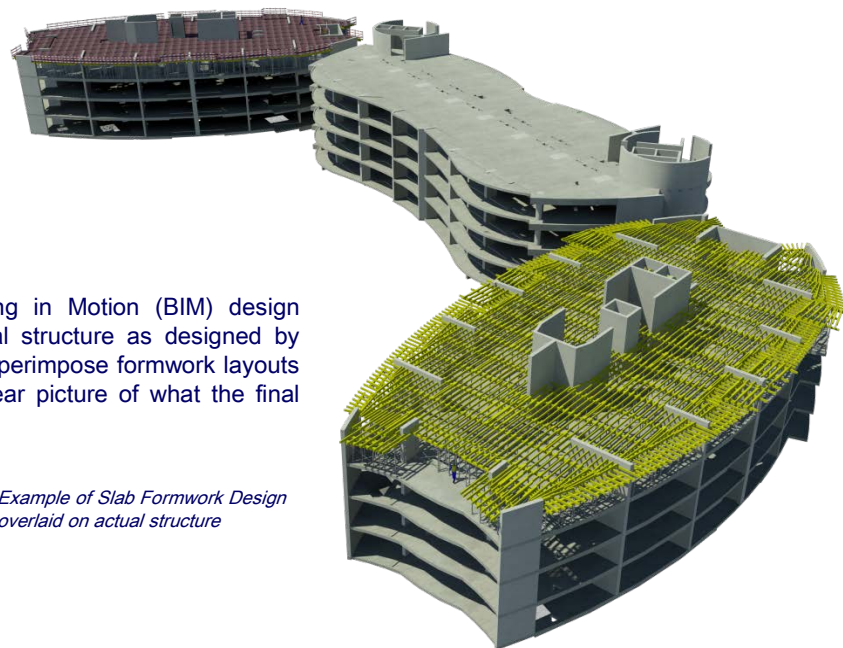
"The expansion to Mauritius is part of our strategy to move into new markets including Sub-Saharan Africa" Cornè Vermaak, Pre-Form Group MD.



Design Innovation – in 3D

Pre-Form's formwork design innovation is ever increasingly becoming a key market differentiator. Our time to market from design to delivery on site keeps reducing, enhancing our ability to make design changes almost in "real time" as structure designs change.

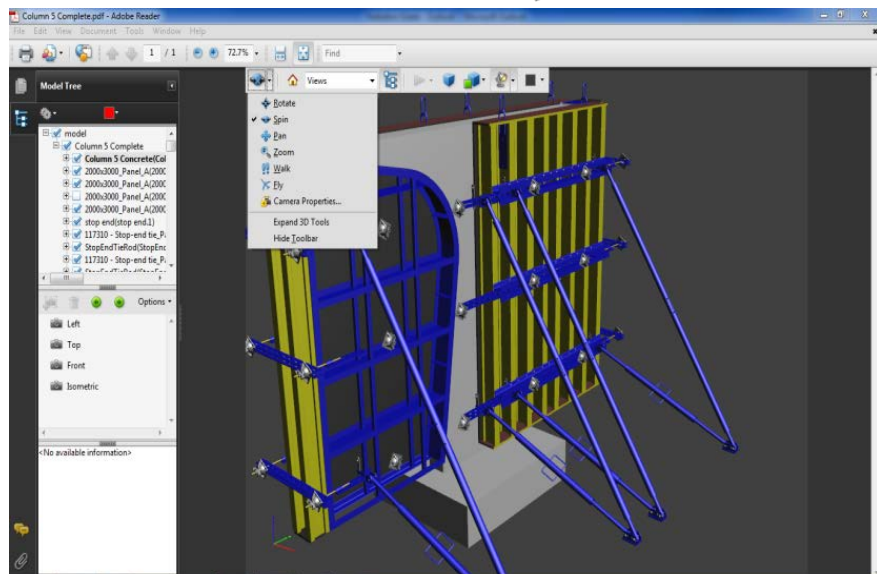
Our use of the "Revit Structure" Building in Motion (BIM) design software enables us to include the actual structure as designed by engineers. With this technology we can superimpose formwork layouts onto planned structures, resulting in a clear picture of what the final design will look like.



Example of Slab Formwork Design overlaid on actual structure

One of the most powerful tools our design office now utilises is the 3D PDF Converter. This enables our customers to review any 3D formwork design in standard Adobe Reader.

This visualisation assists in effective communication between designer and client as users are able to manipulate the image by switching layers on and off. The user is also able to rotate the assembly in real time.



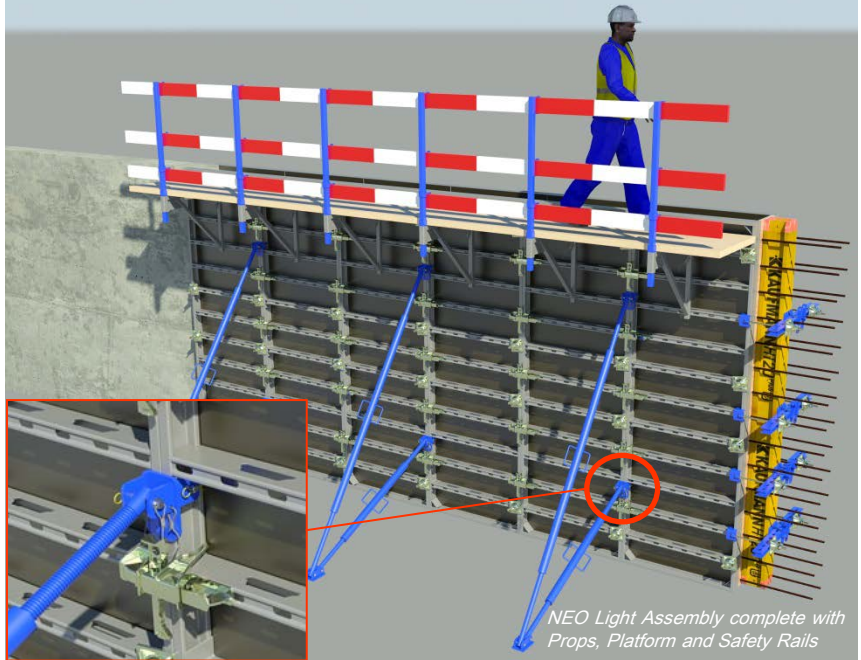
Column Formwork Design viewed in PDF 3D Viewer complete with shutters, props and ties

Solution Update

NEO Light

NEO Light is a versatile walling system, light enough to be man handled and strong enough to be gang-formed and crane handled. **NEO Light** provides an ideal combination of ease of assembly and concrete finish quality. **NEO Light** is a complete system with integrated components such as alignment couplers, working platforms and push-pull props. The **NEO Light** adjustable alignment clamps ensures panels are **ALIGNED, FLUSH** and **TIGHT**.

Our Hire and Contracting division has been using **NEO Light** for wall and shaft shuttering with great success. We have found that due to the versatility, planning is simplified and logistical complexity on site is minimised.



NEO Light Assembly complete with Props, Platform and Safety Rails

Universal Formwork System



Example of Hydraulic Wall Climbing System complete with platforms and safety rails



Close-up of Integrated roll-back mechanism

Pre-Form's new **Universal Formwork System** is a comprehensive solution for multiple formwork applications. The system utilises standard steel beam sections to make up a building "kit" assembled with bolted connections.

Applications of the **Universal Formwork System** varies from hydraulic climbing forms and windshields to large scale civil projects such as, bridge and tunnel construction.



Example of Universal Formwork System designed for bridge construction

Project Update

Sanral Head Office - Pretoria

Contract Size: 9700m²

Main Contractor: G.D. Irons



Sanral Head Office is another project successfully completed with G.D. Irons Construction. The building consists of parking decks and office space.

Although not a big project as far as footprint is concerned, it posed its own set of unique challenges. This included the forming of a smooth and fair sloping cantilever roof slab on the perimeter of the building. The slab was propped up to a height of 8m by making use of Sta-Flex frames and LVL beams.



La Croisette – Mauritius

Contract Size: 90 000m²

Main Contractor: WBHO & BCE Ltd



The La Croisette development represents Pre-Form's first step in establishing a permanent presence in Mauritius. The development is mixed use with residential, retail and office space.

With local labour being a constraint, and to ensure maximum productivity and delivery against program, Pre-Form has deployed all the relevant up to date formwork technology including:

- Polypropylene Coffers
- Adjustable Columns
- Sta-Flex and LVL Beams
- Neo Light Wall Formwork

Additional complexity such as columns cast up to a height of 7.2m in a single lift were addressed by joining adjustable column shutters together.

The equipment shipment started in December 2010 and to date Preform have delivered approximately 30No Adjustable Columns of various heights, 300m² of Neo Light Walling, 7200m² of decking and 5500No polypropylene coffer moulds.



Project Update

OBZ Square, meeting the challenges of a complex building

Contract Size: Soffit area +/- 28 000 m²

Main Contractor: NMC



OBZ Square represents our first project with NMC. It is also the biggest and one of the most complex jobs tackled by Pre-Form Cape to date. Due to the size and complexity, NMC decided to partner with a formwork supplier that had the experience and resources to successfully execute the project in a short space of time.

A key driver in the decision making process was the ability of the formwork contractor to utilise, where possible, NMC's own formwork. This requirement is becoming the norm rather than the exception, and in accordance with our solution driven approach, Pre-Form is utilising 2000m² of NMC's equipment for the duration of the project. This ensures yard revenue and NMC's targeted ROA..

The project got off to a slow start as the team wrestled with the design complexities. However we are confident that we will meet or even beat the contractual deadlines for the structure. *"The transfer beams on Level 1 and the lifts were a huge challenge due to the constraints from the reinforcing, this however was overcome with valuable input from both sides. We have clawed back the structural program from being behind by three weeks to "on program" within a two month period."* – Garth Robb, Contracts Manager



Shoprite Checkers Brackenfell DC

Contract Size: Columns: +/- 5000 m²

Main Contractor: Stefanutti Stocks Building Western Cape



Our latest project with Stefanutti Stocks is also one of the most challenging. The contract required that all structural work, for the new Shoprite Checkers DC, be completed in less than 4 months. It also required that the concrete finish on all columns are DOA 1. The client stipulated that only steel columns are to be used and no timber faced boxes were allowed on site. With most columns in the 15m to 18.5m height category, and a total of 5000m² to be completed, six 6m lifts per day had to be achieved to make program.

The site is divided into 2 facilities, Fresh Mark and the Flow Trough Facility. These 2 facilities are connected by an underground tunnel 3m high 3.5 wide and +/- 100m in length. Furthermore special formwork was required for the stepped dock leveller columns. The bulk of the structural work was due for completion by December 2010.

